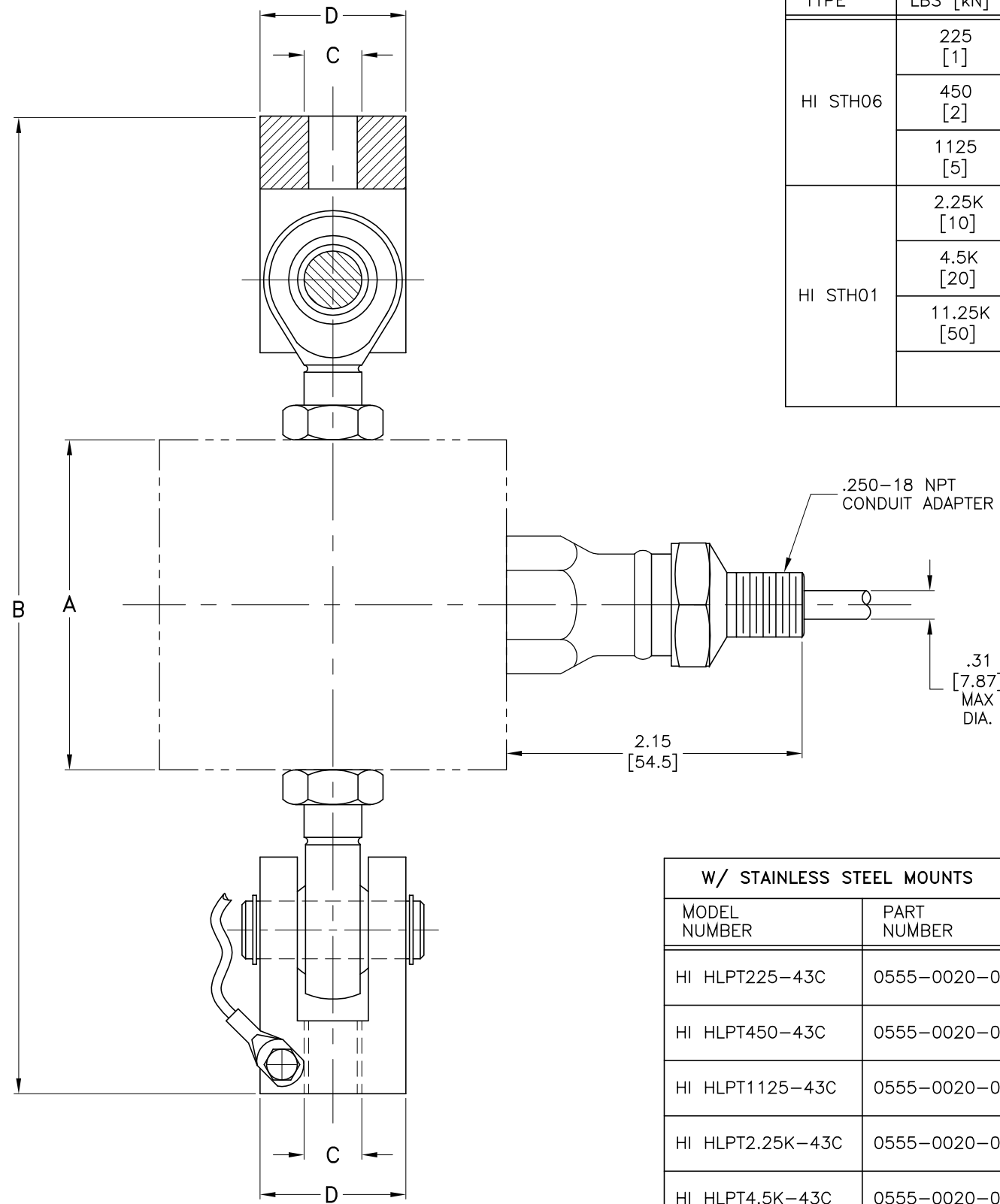


| REV. | ECO/DDC | DESCRIPTION | DATE | DRAFT | CHECK | APV'D |
|------|---------|------------------|----------|--------|-------|--------|
| A | 08107 | RELEASED | 07-09-01 | L.B.O. | S.N. | V.J.C. |
| B | 10272 | REVISED PER ECN. | 01-09-08 | T.B.N. | S.N. | V.J.C. |

DIMENSIONS- INCHES & [mm]

| SENSOR TYPE | CAPACITY LBS [kN] | A | B | C | D |
|-------------|-------------------|--------------|---------------|-------------|-------------|
| HI STH06 | 225 [1] | 2.42 [61.5] | 9.13 [232.0] | .500-13 UNC | 1.38 [35.0] |
| | 450 [2] | | | | |
| | 1125 [5] | | | | |
| HI STH01 | 2.25K [10] | 3.62 [92.0] | 11.02 [280.0] | .625-11 UNC | 1.77 [45.0] |
| | 4.5K [20] | | | | |
| | 11.25K [50] | 5.35 [136.0] | 14.96 [380.0] | 1.000-8 UNC | 2.36 [60.0] |
| | | | | | |



| W/ STAINLESS STEEL MOUNTS | | W/ GALVANIZED STEEL MOUNTS | |
|---------------------------|--------------|----------------------------|--------------|
| MODEL NUMBER | PART NUMBER | MODEL NUMBER | PART NUMBER |
| HI HLPT225-43C | 0555-0020-01 | HI HLPT225-45C | 0555-0020-11 |
| HI HLPT450-43C | 0555-0020-02 | HI HLPT450-45C | 0555-0020-12 |
| HI HLPT1125-43C | 0555-0020-03 | HI HLPT1125-45C | 0555-0020-13 |
| HI HLPT2.25K-43C | 0555-0020-04 | HI HLPT2.25K-45C | 0555-0020-14 |
| HI HLPT4.5K-43C | 0555-0020-05 | HI HLPT4.5K-45C | 0555-0020-15 |
| | | HI HLPT11.25K-45C | 0555-0020-16 |

- CABLE WIRE ENDS ARE STRIPPED BACK 0.5 IN. AND TINNED. CABLE JACKET IS STRIPPED BACK APPROX. 5 IN.
- LOAD SENSOR IS STAINLESS STEEL 17-4PH (1.4548).
- THIS DRAWING IS SUBJECT TO CHANGE WITHOUT NOTICE.
- CABLE IS 6 CONDUCTOR, SHIELDED AND 20 FT. IN LENGTH. CABLE SHIELD IS FLOATING.
- DO NOT WELD AFTER LOAD SENSOR IS INSTALLED.
- WIRE COLOR CODE FLAG LABEL, PN 0530-0594, IS FOUND APPROX. 10 IN. FROM END OF CABLE.

EXCITATION + RED
 EXCITATION - BLACK
 SIGNAL + GREEN
 SIGNAL - WHITE
 C2 + GRAY
 C2 - VIOLET
 SHIELD YELLOW

1. CLEVIS POSITION IS 90° AS SHOWN.

NOTES: UNLESS OTHERWISE SPECIFIED

| ITEM | QTY | 0588-0082 | OUTLINE DRAWING, LOAD POINT, HI HLPT SERIES | COMMENTS |
|--|-----|-------------------------|---|---|
| PARTS LIST | | | | |
| UNLESS OTHERWISE SPECIFIED DIMENSIONS ARE IN INCHES TOLERANCES ARE: N/A FIRST ANGLE PROJECTION | | CONTRACT NO. APPROVALS | | |
| MATERIAL | | DRAWN R. BILEK | DATE 08-05-99 | TITLE OUTLINE DRAWING, LOAD POINT, HI HLPT SERIES |
| FINISH | | CHECKED L. OFTEDAHL | DATE 09-02-99 | |
| DO NOT SCALE DRAWING | | APPROVED T. KOPCZYNSKI | DATE 09-24-99 | |
| | | ISSUED K. McNULTY | DATE 09-24-99 | |
| | | PRODUCTION | DATE | SIZE D 21316 FSCM 0588-0082 DRAWING NO. B REV. |
| | | FILE NAME: 588082B1.DWG | | SCALE: NONE SHEET 1 OF 1 |

PROPRIETARY NOTICE
 ALL DATA AND INFORMATION CONTAINED IN OR DISCLOSED BY THIS DOCUMENT IS CONFIDENTIAL AND PROPRIETARY INFORMATION OF HARDY INSTRUMENTS INC. AND ALL RIGHTS THEREIN ARE EXPRESSLY RESERVED. BY ACCEPTING THIS MATERIAL THE RECIPIENT AGREES THAT THIS MATERIAL AND THE INFORMATION CONTAINED THEREIN IS HELD IN CONFIDENCE AND IN TRUST AND SHALL NOT BE USED, COPIED, REPRODUCED IN WHOLE OR IN PART, NOR ITS CONTENTS REVEALED IN ANY MANNER TO OTHERS, EXCEPT TO MEET THE SPECIFIC PURPOSE FOR WHICH IT WAS DELIVERED.